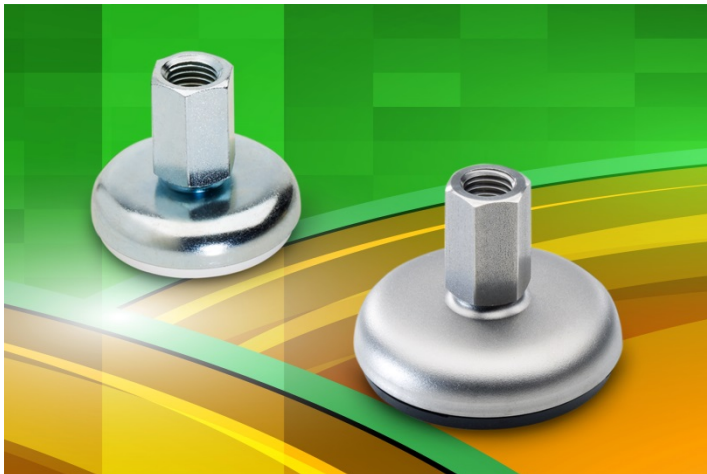


Elesa LMR non-slip levelling feet take custom shafts

The new Elesa LMR levelling feet with non-slip base are especially designed to offer users the extra facility to fit custom length shafts for those awkward occasions when extra height or a special configuration is required with in-built levelling functionality.

The LMR feet in steel or stainless steel feature an 80/85 Shore A NBR rubber disk foot to prevent slippage and aid conformity with uneven or rough surfaces. The range covers sizes from 50mm to 100mm dia. and accepts M8 to M20 threaded shafts. Custom shafts at their simplest can consist of a length of studding – or may be something more complex such as a special fabrication or casting.

Further information regarding Elesa products may be found at: www.elesa.co.uk or follow them on twitter: [www.twitter.com/ElesaUK](https://twitter.com/ElesaUK) – also see www.youtube.com/elesauk.



Press Box

Contact:	Nigel Pritchett
Phone:	+44 (0)1526 322669
E-mail:	marketing@elesa.co.uk

Elesa (UK) Ltd
26 Moorlands Estate, Metherringham,
Lincolnshire, LN4 3HX, U.K.
www.elesa.co.uk – e-mail: sales@elesa.co.uk

